


## 1. Specification

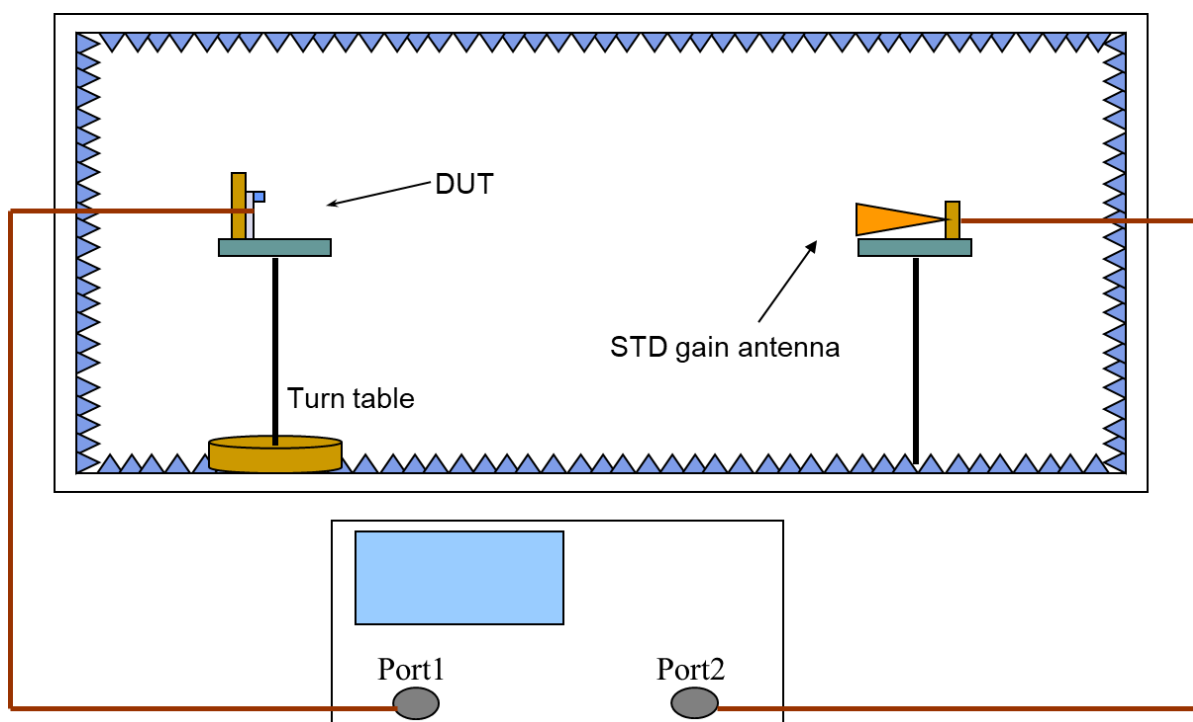
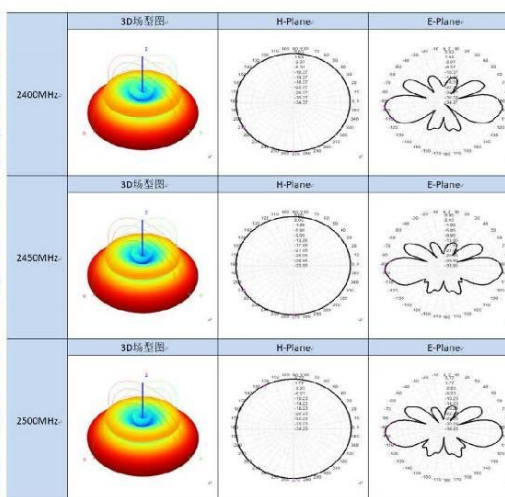
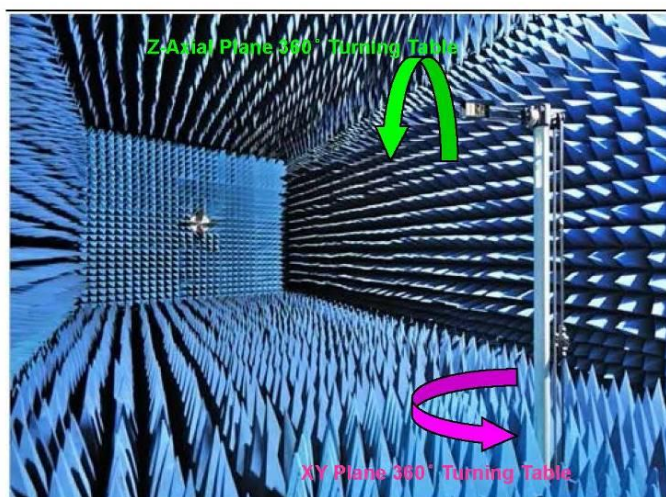
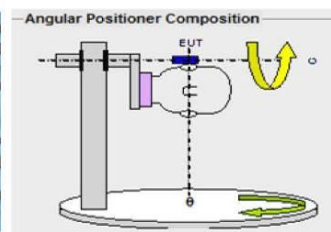
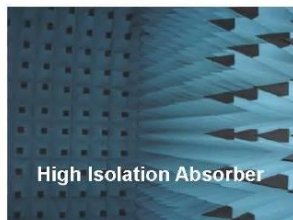
Sample Photo		
		
A. Electrical Characteristics		
Frequency	806-960MHz	1710-2700MHz
S.W.R.	<=2.0	<=2.2
Antenna Gain	5-7dBi	8-11dBi
Polarization	Vertical	Vertical
Horizontal Beamwidth	66-94°	56-80°
Vertical Beamwidth	64-89°	64-89°
F/B	>16dB	>20dB
Impedance	50Ohm	
Max. Power	50W	
B. Material & Mechanical Characteristics		
Connector Type	N connector	
Dimension	260*260*35mm	
Radome material	ABS	
Mount Pole	ø30-ø50	
Weight	1.53Kg	
C. Environmental		
Operation Temperature	- 40 °C ~ + 85 °C	
Storage Temperature	- 40 °C ~ + 85 °C	
Operation Humidity	< 95%	
Rated Wind Velocity	36.9m/s	

## Test Equipment & Conditions

1. Network Analyzer: Keysight E5071C

2. 3D Chamber Test System

- .Chamber Size: 9 x 5 x 4 m<sup>3</sup>
- .Freq. Range: 0.4 ~ 18.0 GHz
- .Double Ridge Horn Antenna
- .VNA: Agilent E5071C
- .3D Turning Table and Positioner
- .ADT Solution 3D Testing Software

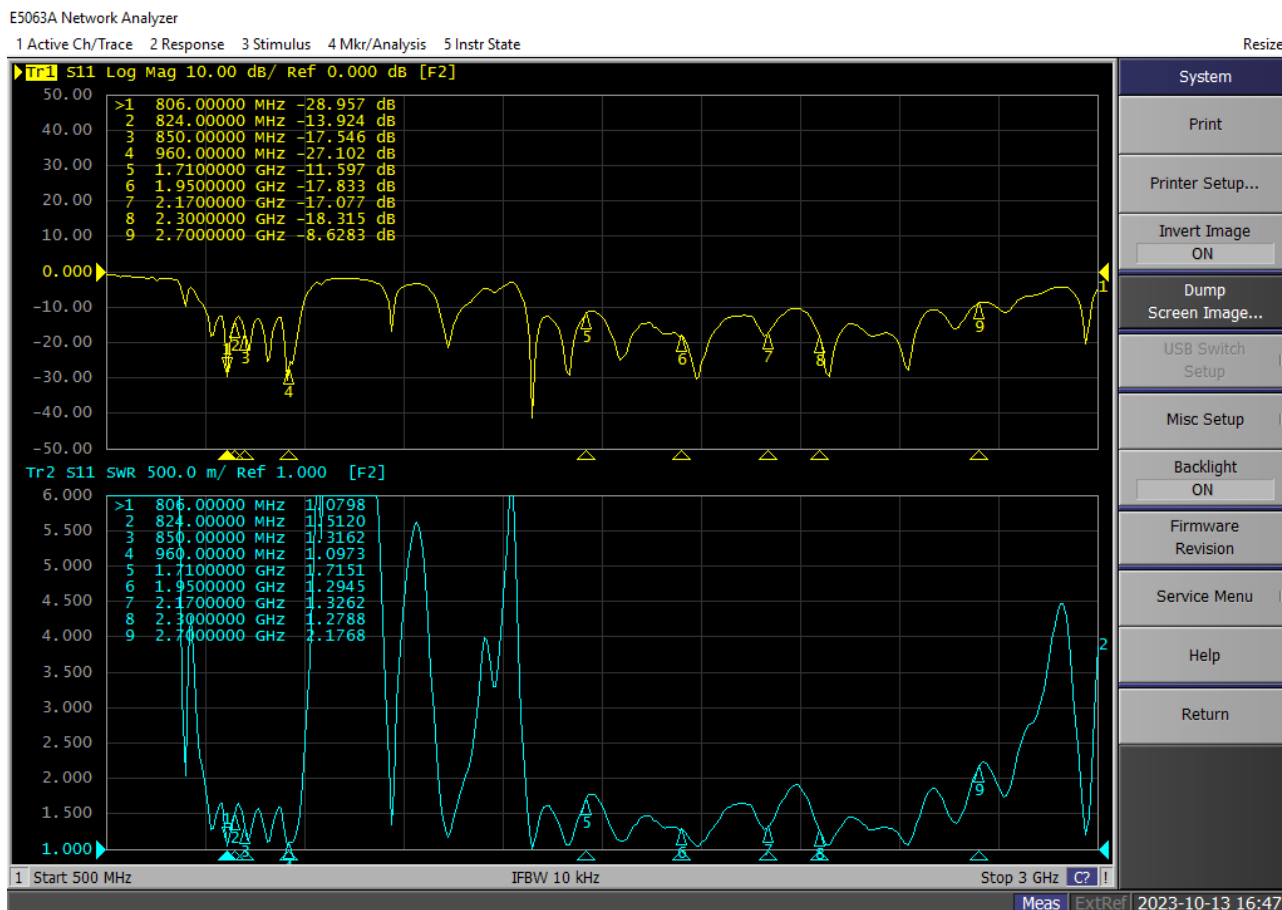




Product Number: BGS-AN14000-26026035G  
Product Name: 4G LTE Flat Panel Antenna 14dBi

## 2. Antenna - S Parameter Test Data

### 2.1 VSWR





**Product Number: BGS-AN14000-26026035G**  
**Product Name: 4G LTE Flat Panel Antenna 14dBi**

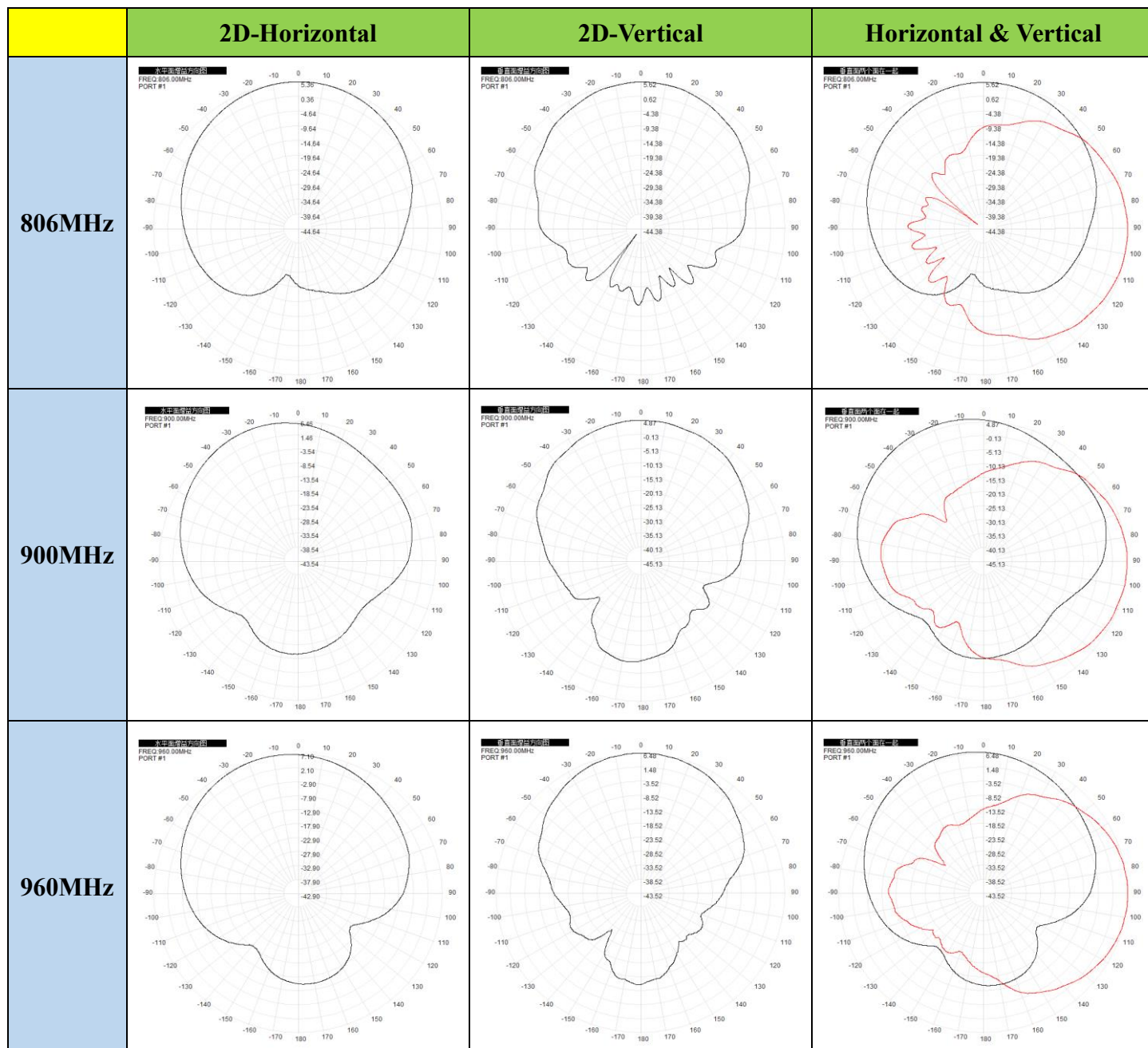
## 2.2 Gain:

Frequency(MHz)	Gain(dBi)
806	5.6
810	5.7
820	5.6
840	5.1
860	4.5
880	5.4
900	6.5
920	7.7
940	6.6
960	7.1
1700	9.3
1800	9.6
1900	10.4
2000	10.0
2100	9.9
2200	10.4
2300	11.0
2400	10.3
2500	10.3
2600	9.8
2700	8.5



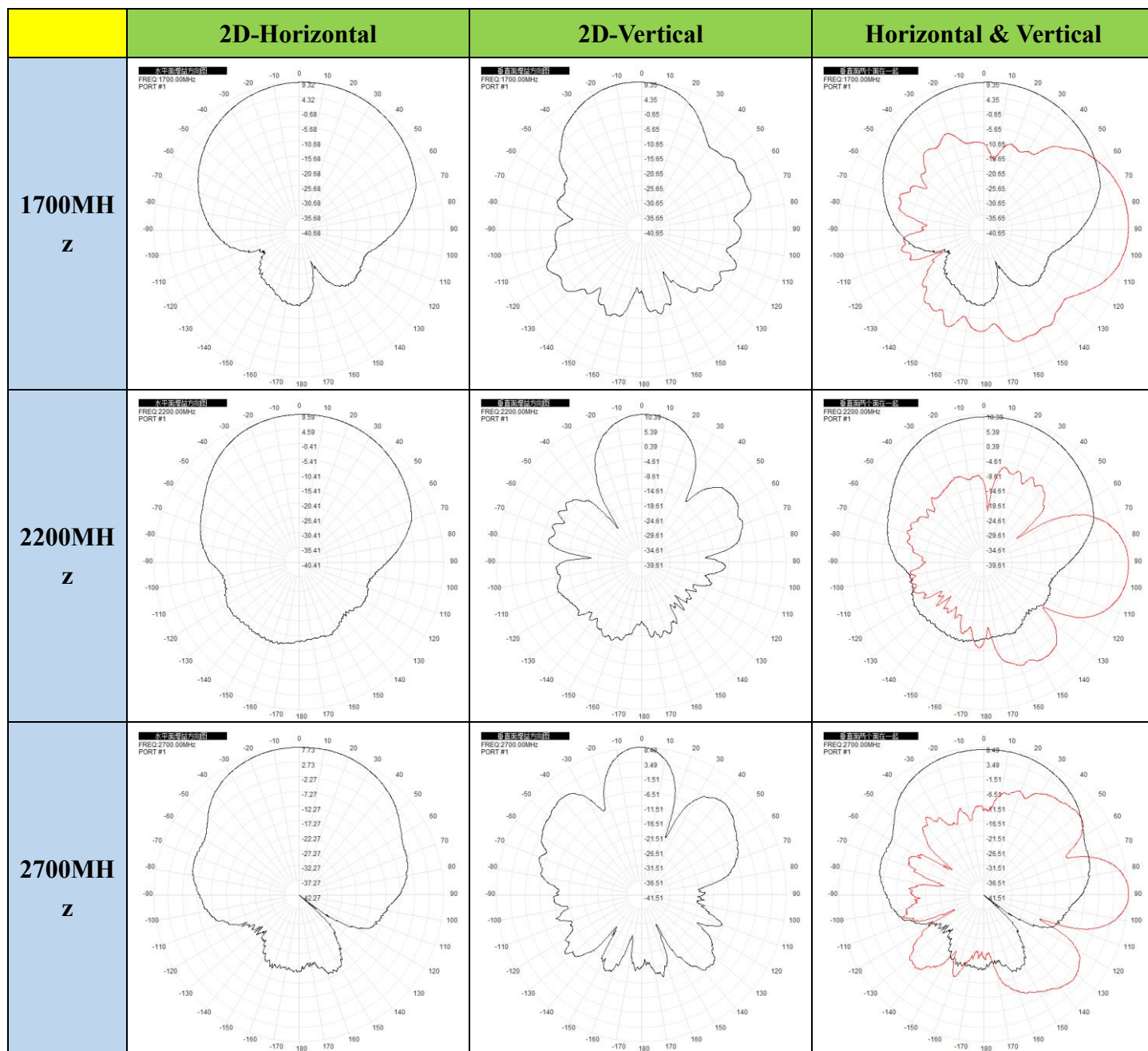
Product Number: BGS-AN14000-26026035G  
 Product Name: 4G LTE Flat Panel Antenna 14dBi

## 2.3 Radiation Pattern





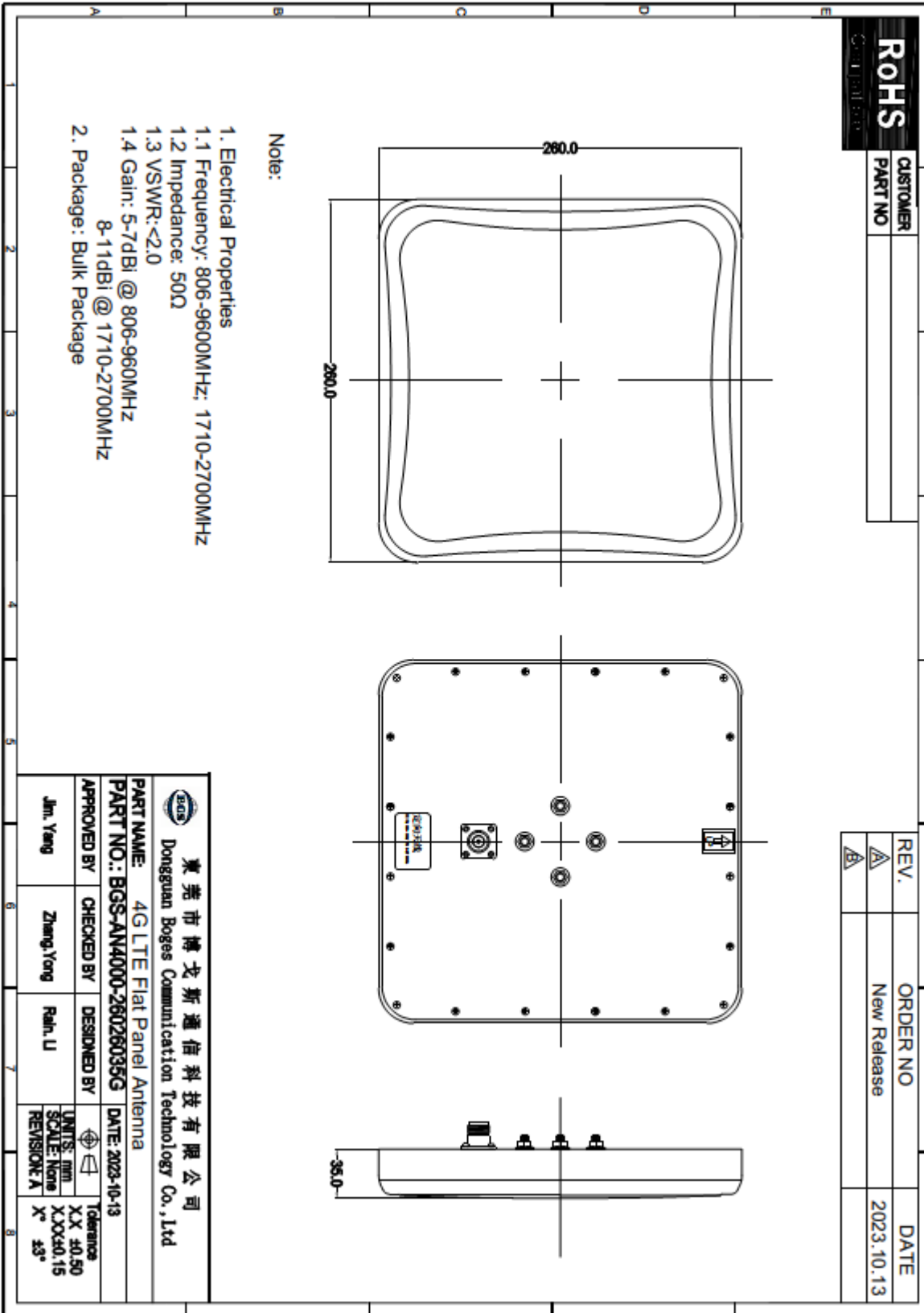
Product Number: BGS-AN14000-26026035G  
 Product Name: 4G LTE Flat Panel Antenna 14dBi





Product Number: BGS-AN14000-26026035G  
 Product Name: 4G LTE Flat Panel Antenna 14dBi

### 3. Mechanical Drawing





Product Number: BGS-AN14000-26026035G  
 Product Name: 4G LTE Flat Panel Antenna 14dBi

