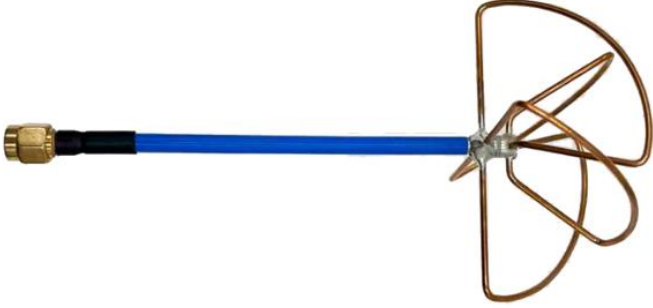


1. Specification

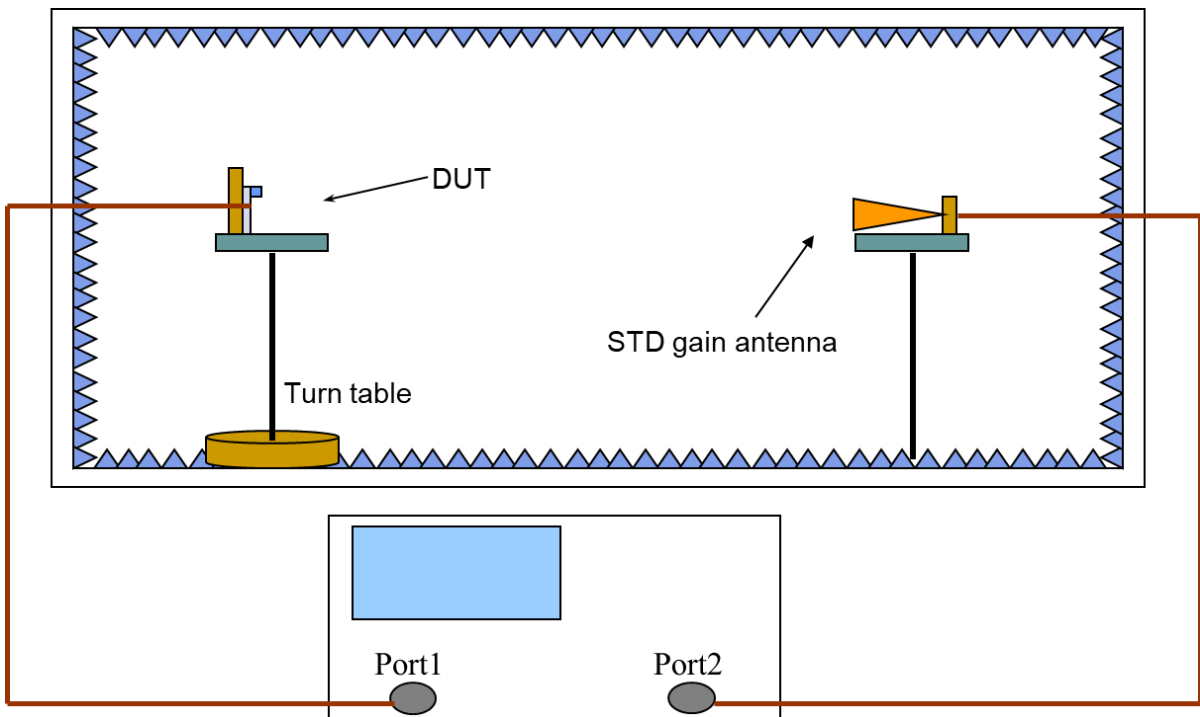
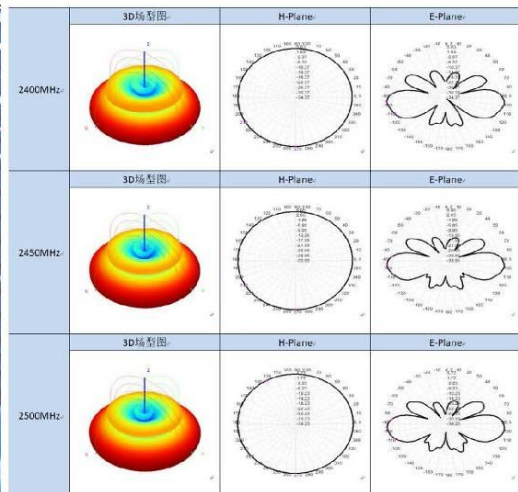
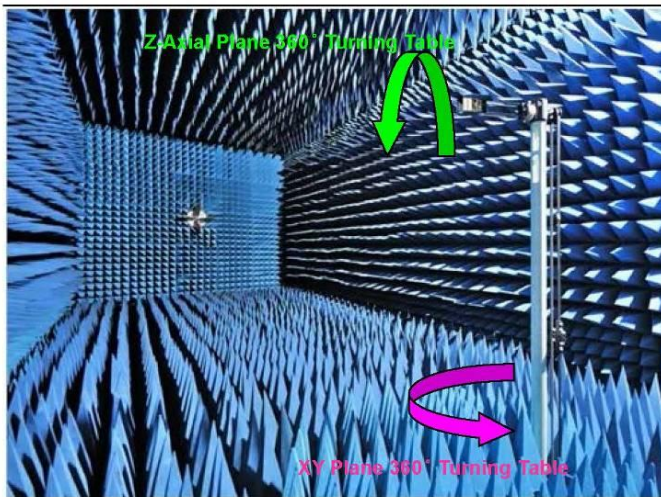
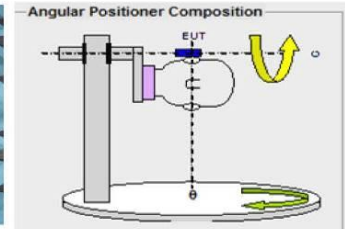
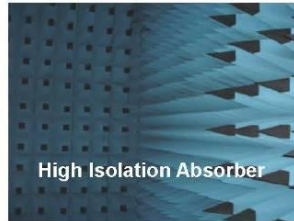
Sample Photo	
	
A. Electrical Characteristics	
Frequency	2400-2500MHz
Impedance	50 Ohm
S.W.R.	<2.0
Antenna Gain	2dBi
Efficiency	≈82%
Polarization	CP
Horizontal Beamwidth	360°
Vertical Beamwidth	81~92°
Max Power	5W
B. Material & Mechanical Characteristics	
Connector Type	SMA connector
Dimension	Φ 68*132mm
Weight	0.016Kg
Antenna material	Copper
C. Environmental	
Operation Temperature	- 40 °C ~ + 85 °C
Storage Temperature	- 40 °C ~ + 85 °C

Test Equipment & Conditions

1. Network Analyzer: Keysight E5071C

2. 3D Chamber Test System

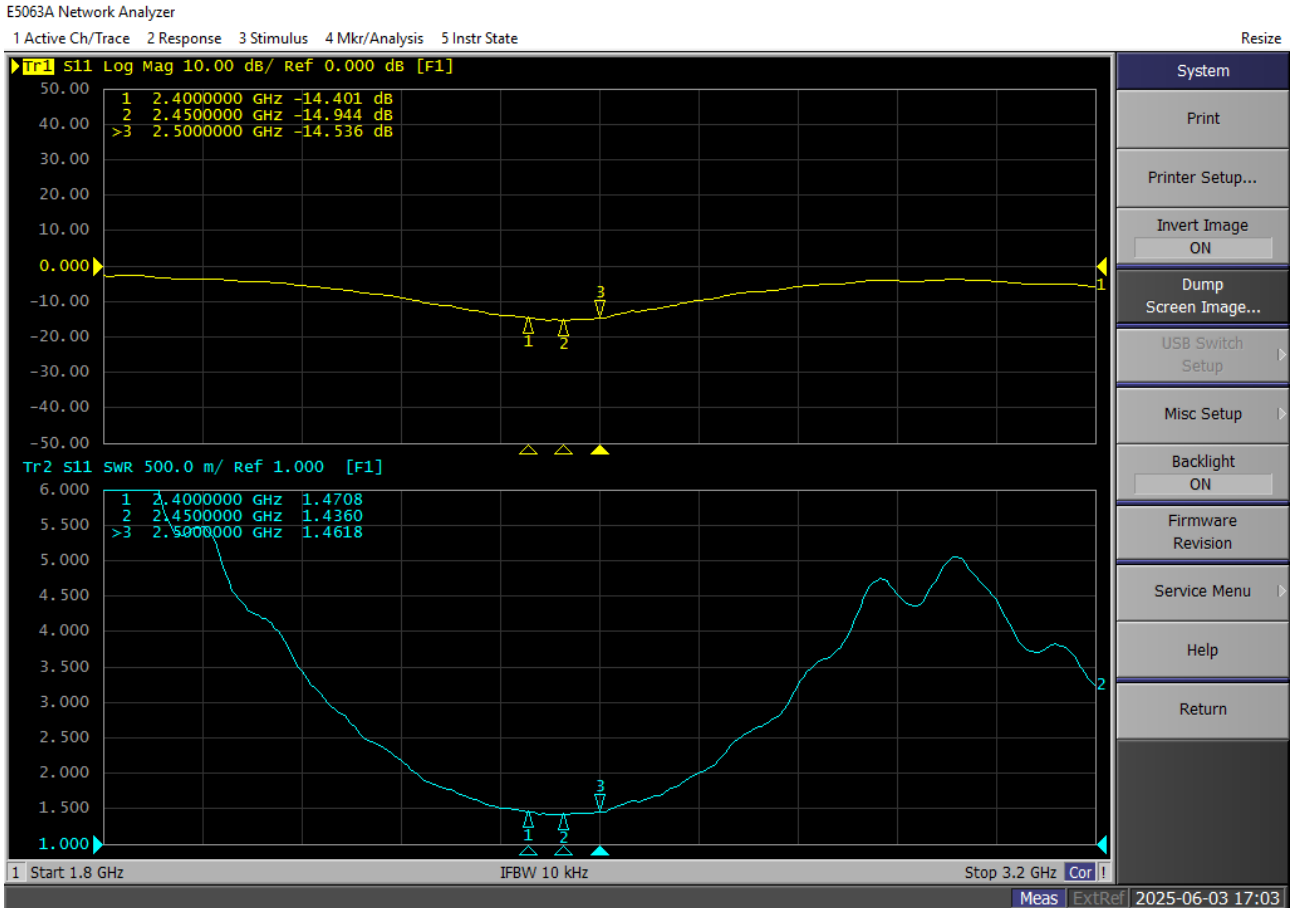
- .Chamber Size: 9 x 5 x 4 m³
- .Freq. Range: 0.4 ~ 18.0 GHz
- .Double Ridge Horn Antenna
- .VNA: Agilent E5071C
- .3D Turning Table and Positioner
- .ADT Solution 3D Testing Software



Product Number: BGS-AN2400-68132N
 Product Name: 2400-2500MHZ Cloverleaf Antenna 4 Blade

2. Antenna - S Parameter Test Data

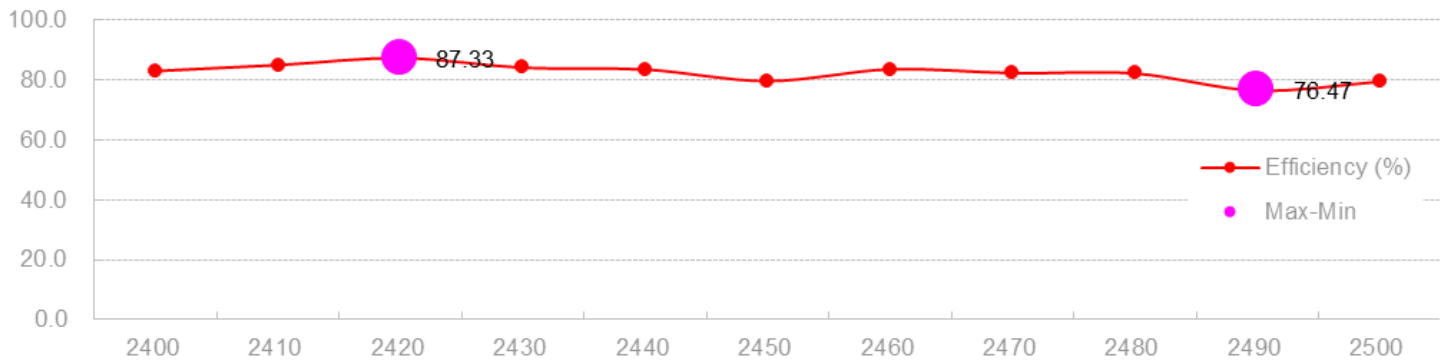
2.1. VSWR



Product Number: BGS-AN2400-68132N
 Product Name: 2400-2500MHZ Cloverleaf Antenna 4 Blade

2.2. Total Efficiency & Gain:

Frequency (MHz)	2400	2410	2420	2430	2440	2450	2460	2470	2480	2490	2500
Gain (dBi)	1.4	1.6	1.9	1.7	1.5	1.4	1.7	1.6	1.6	1.4	1.5
Efficiency (%)	83.0	85.0	87.3	84.1	83.5	79.7	83.6	82.3	82.2	76.5	79.5



2.3 Radiation Pattern

	3D	2D-Horizontal	2D-Vertical
AXIS	<p>立体视角</p>	<p>顶端俯视</p>	<p>前方视角</p>
2400M Hz			
2450M Hz			
2500M Hz			

3. Mechanical Drawing

